

**Contents**

Fannin Elementary ..... 2

*General comments, campus capacity, and student demographics*..... 2

    1.0 School Site..... 4

    2.0 Building Systems and Components ..... 5

    3.0 Building Safety and Security ..... 9

    4.0 Educational Adequacy ..... 12

# Fannin Elementary



## *General comments, campus capacity, and student demographics*

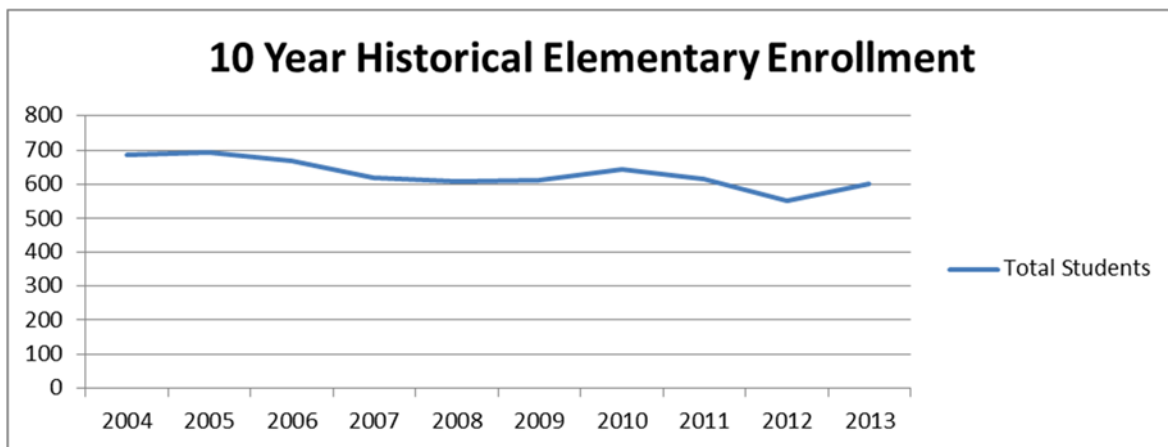
### **General comments:**

Fannin Elementary campus was originally constructed in 1954 with additions in 1970 and 1981 and an addition and major renovation in 2000. The campus is comprised of about 73,000 square feet and rests on approximately 4.9 acres. There are currently 606 students enrolled, Pre-K through 5<sup>th</sup> grades, and 71 staff. The buildings are generally in good condition, but due to their age there are pressing maintenance and repair issues that need to be addressed.

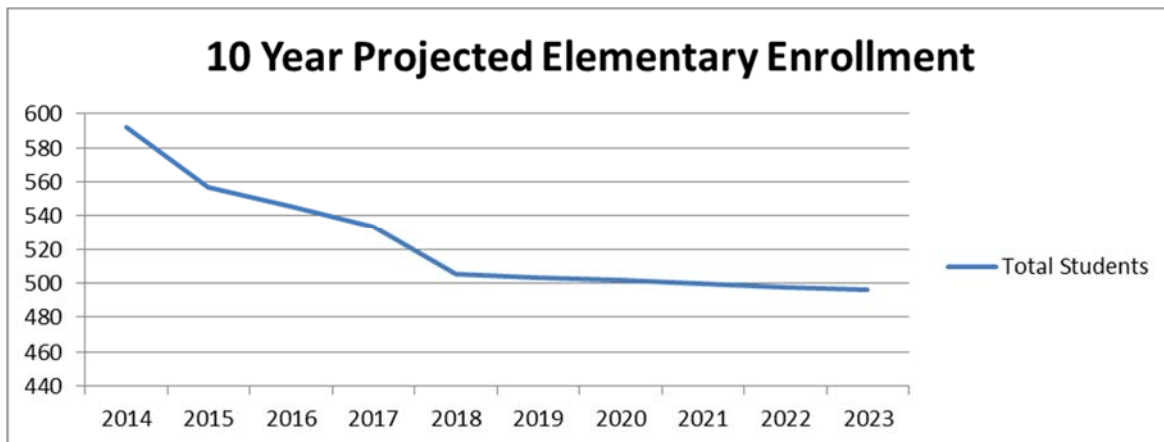
<b>Current Enrollment:</b>	Pre-K	0
	Kinder	91
	1st	108
	2nd	90
	3rd	95
	4th	120
	5th	91
	<b>Total:</b>	<b>595</b>

<b># of Permanent General Instruction Classrooms:</b>	31	<i>(excludes portable bldgs., science and PC labs, and specialized learning areas)</i>
<b>Maximum # of Students per Classroom:</b>	22	
<b>Maximum # of Students - Campus:</b>	682	<i>(without utilization factor)</i>
<b>Utilization Factor:</b>	0.95	<i>(to allow enrollment and program fluctuation)</i>
<b>Adjusted Campus Capacity:</b>	648	
<b># of Students Over Capacity:</b>	N/A	
<b>% Capacity:</b>	92%	

10 Year Historical Elementary Enrollment										
Grade	2004	2005	2006	2007	2008	2009	2010	2011	2012	2013
Pre-K	0	0	0	0	0	0	0	0	0	0
Kinder	110	107	106	85	83	84	86	90	97	89
1st	110	128	111	110	97	100	110	87	78	108
2nd	97	105	133	111	108	97	104	114	82	94
3rd	132	93	100	118	110	110	107	107	106	94
4th	124	133	98	96	118	117	115	104	96	120
5th	113	128	121	98	94	105	120	115	92	96
<b>Total</b>	<b>686</b>	<b>694</b>	<b>669</b>	<b>618</b>	<b>610</b>	<b>613</b>	<b>642</b>	<b>617</b>	<b>551</b>	<b>601</b>
<b>Growth %</b>	N/A - Base Year	1.17%	-3.60%	-7.62%	-1.29%	0.49%	4.73%	-3.89%	-10.70%	9.07%
<b>Student Growth</b>	N/A - Base Year	8	(25)	(51)	(8)	3	29	(25)	(66)	50



10 Year Projected Elementary Enrollment										
Grade	2014	2015	2016	2017	2018	2019	2020	2021	2022	2023
Pre-K	0	0	0	0	0	0	0	0	0	0
Kinder	87	85	84	82	80	79	77	76	74	73
1st	88	87	85	83	81	81	80	80	79	78
2nd	109	89	87	86	84	85	86	86	87	88
3rd	93	107	88	86	84	83	82	80	79	78
4th	95	94	109	89	87	88	89	90	91	92
5th	120	95	93	108	88	88	88	87	87	87
<b>Total</b>	<b>592</b>	<b>557</b>	<b>546</b>	<b>534</b>	<b>506</b>	<b>503</b>	<b>501</b>	<b>500</b>	<b>498</b>	<b>496</b>
<b>Growth %</b>	-1.54%	-5.90%	-2.03%	-2.15%	-5.29%	-0.41%	-0.40%	-0.38%	-0.37%	-0.35%
<b>Student Growth</b>	(9)	(35)	(11)	(12)	(28)	(2)	(2)	(2)	(2)	(2)



## 1.0 School Site

### Parking and Drives

Area	Regular Spaces	ADA	Van Accessible	Surface Type	Surface Condition	Striping Condition	Lighting
South	10	1	0	Asphalt	Fair	Good	N/A
North	72	4	4	Asphalt	Poor	Good	Good
<b>Total</b>	<b>82</b>	<b>5</b>	<b>4</b>				
<b>Total recommended/required</b>	<b>101</b>	<b>4</b>	<b>2</b>				
<b>Difference +/-</b>	<b>(19)</b>	<b>+ 1</b>	<b>+ 2</b>				

Parking based on: 71 Staff  
606 Students

- Asphalt failure at South service entrance apron. All asphalt surfaces need to be rebuilt.



- No designated visitor parking at south or main entrance for visitors.
- Non-hard surface parking for staff at northwest.



## 2.0 Building Systems and Components

### ADA Accessibility

- Hand rails at portable building ramps are not compliant.
- Main building – Some parking spaces/slopes, routes from parking and building to building are not ADA accessible.
- Portable – Signage, some door levers, restrooms, and drinking fountains.

### Roofs

- Staff reporting windows in connecting hall leak, connecting hall is between Wing C and the original building.
- Administration Wing original roof – minor granule loss, minor ponding; approximately 5 years of life left.



- Administration Wing Original Roof – Clogged gutter at front of building can cause runoff to seep into fascia.



- Administration Wing original roof – Cypress tree over roof and needles piling up at drains and filling gutter and oak on southwest side; major ponding.



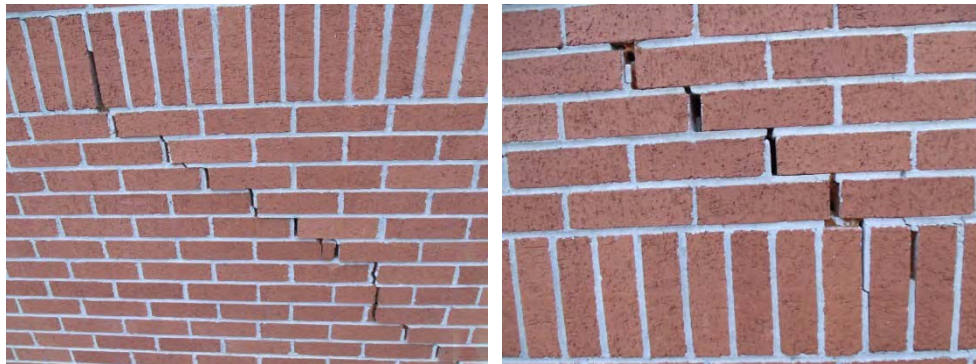
- Classrooms – Leaks in Room D-103 at air conditioning penetration; leak in Room D-110 at southeast wall; leak in Room C-110 from air conditioning vent.

**Foundations**

- Southwest corner of cafeteria; some cracks at northwest of Main Building (3 locations).



- Cracks at northeast of 2000 addition – no erosion.



- No splash blocks – east side of 2000 addition – erosion occurring.



- Interior CMU crack in hall by Room A-105



**Building Envelope**

- Gym and portable are single-pane windows and should be considered for replacement during next major renovation.

**Drinking Fountains**

-

Location	Quantity	ADA
D Hall	1	1
C Hall	2	2
B Hall	1	0
A Hall	1	0
Cafeteria	1	1
Gym	2	2
Portable	1	0
<b>Totals</b>	<b>9</b>	<b>6</b>
<b>+ / (-) Recommended *</b>	<b>+ 6</b>	<b>+ 2</b>

**Restrooms**

-

**Student**

Campus/Location	Boys Commodes	ADA Boys Commodes	Urinals	Sinks	ADA Sinks	Girls Commodes	ADA Girls Commodes	Classroom/Unisex Commodes	ADA Classroom/Unisex Commodes
D Hall	2	1	4	4	3	6	2		
C Hall	3	1	3	3	3	6	2		
B Hall	1	1	2	6	0	3	1		
Cafeteria	1	1	1	2	0	1	1		
Gym	1	1	3	4	4	4	1		
Portable				3				3	
<b>Totals</b>	<b>8</b>	<b>5</b>	<b>13</b>	<b>22</b>	<b>10</b>	<b>20</b>	<b>7</b>	<b>3</b>	<b>0</b>
<b>+ / (-) Recommended</b>	<b>+ 2</b>		<b>+ 3</b>	<b>+ 15</b>		<b>+ 13</b>			

**Staff**

Campus/Location	Men's Commodes	ADA Men's Commodes	Urinals	Sinks	ADA Sinks	Women's Commodes	ADA Women's Commodes	Unisex Commodes	ADA Unisex Commodes
Front Office	1	1		3	1	2	1		
Cafeteria Kitchen				1				1	
<b>Totals</b>	<b>1</b>	<b>1</b>	<b>0</b>	<b>4</b>	<b>1</b>	<b>2</b>	<b>1</b>	<b>1</b>	<b>0</b>

### **Exterior Windows, Doors, and Walls**

- Main Building – some cracks in walls
- Portables – door finish in poor condition
- Repaint wood soffits and fascia
- Leaking gutters – stains – north side



- Gym doors chipping and oxidized



- Portables skirting paint chipping



### **Flooring**

- Carpet installed in 1999
- A Hall, B Hall, C Hall, D Halls and Classrooms – Carpet in bad condition – visible seams, stained
- Portables – Carpet in bad condition – stained

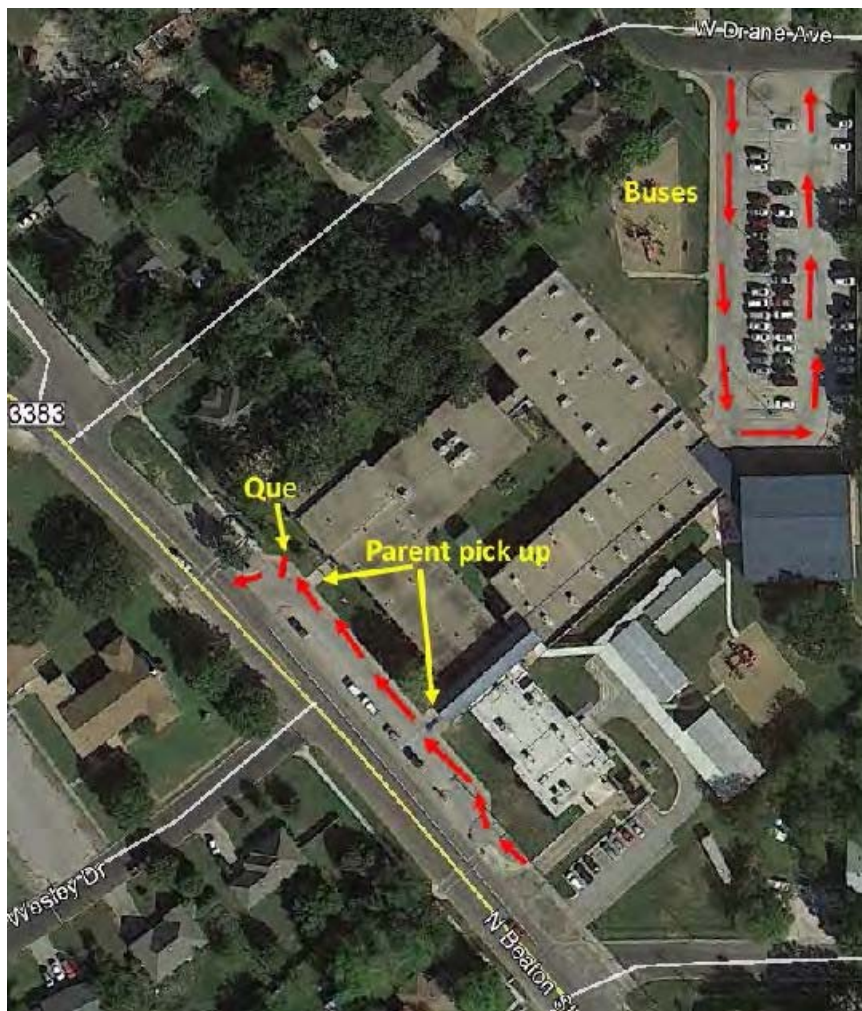
### **Interior Doors, Cabinets, Ceilings and Walls**

- Cafeteria ceiling – bowed and discolored
- Portable ceiling – Bowed, discolored and mismatched



### 3.0 Building Safety and Security

#### Student Loading Areas



- No canopy at parent pickup location on West.
- Parents pick up on the west side from the entrance near the main office and the hall near the library. There is only enough space for 13 vehicles to stack off of the right-of-way. Cars will stack for over 500 feet beyond the fire station on N Beaton Street across W College Ave.
- Buses pickup on the northeast side.

#### Playgrounds and Athletic Field Equipment

- No secure fence or shade canopy to protect students and equipment from the elements.
- North Playground – inadequate fall material (average depth ½")
- Insufficient playground equipment for student enrollment

- Limited equipment – North



- Limited equipment – South



### **Campus Security Systems**

- Campus not fenced with secure gates.
- No interior or exterior security cameras
- No secure vestibule.
- Main Building – no security lights on north side of building
- Burglar alarm only covers 40-50% (covers PC Lab) but not back half of building. Portables also have burglar alarm. Cafeteria and Gym do not have a burglar alarm.

### **Life Safety Systems**

- Cafeteria – No pull stations, wall packs Emergency lights, smoke detectors, heat sensors, or sprinkler.
- Main building halls – No wall packs Emergency lights, or sprinkler.
- Main building classrooms – No smoke detectors or heat sensors.
- Main building restrooms – No wall packs emergency lights, smoke detectors, or heat sensors.
- Gym – No wall packs emergency lights, smoke detectors, heat sensors, or sprinkler.
- Gym restrooms – No wall packs emergency lights, smoke detectors, or heat sensors.
- Portables – No wall packs emergency lights, smoke detectors, or heat sensors.
- Portables restrooms – No strobes, no emergency lights, smoke detectors or heat sensors.

- Portable – pull station broken; hand sanitizer is an obstruction below pull station.



**4.0 Educational Adequacy**

**Size of Academic Learning**

- Most classrooms do not meet current TEA space requirements of 800 square feet minimum for Pre-K through 1st grades and 700 square feet minimum for 2<sup>nd</sup> through 5<sup>th</sup> grades.

**Specialized Learning Areas**

- 7 specialized classrooms (Speech, Dyslexia, GT, special education, and ISS).

**Library/Resource/Media Center**

-

# of students	606
Total sq. ft.	1,464
TEA recommended sq. ft.	3,318
+ / (-) TEA recommended	(1,854)
Meets TEA recommended	No
Storage sq. ft.	N/A
Media Center sq. ft.	N/A
Office sq. ft.	Shared
Work Room sq. ft.	N/A
Age appropriate	Yes

**Gymnasium, Athletic Facilities, P.E. Areas**

- Practice gym has 5,070 square feet with a seamless rubber floor.

**Science**

- No designated science lab.

**Music Program and Art**

- No acoustical wall treatment; shares with art; poor storage.
- Carpet adequate for music but not for art due to spills.

**Computer Labs**

-

Room	Square feet	+ / (-) TEA 900 sq. ft. requirement	Max # of PC's *	Current # of PC's	PC's + / (-) TEA requirement
B100	961	+ 61	27	30	+ 3

- Inadequate PC labs for campus enrollment.

**Teachers' Lounge and Work Rooms**

- Workroom B101 – 382 square feet with 1 sink.
- Teacher’s Lounge – C Hall – 350 square feet, 6 seats, 1 sink, 1 microwave, 1 stove, 1 refrigerator, and 1 ice machine.

### Cafeteria and Kitchen

- Service drive of Main Entrance (delivery trucks pull into street to backup)



- Loading dock at 21.02% - unsafe for deliveries.



- Congested kitchen and shared office space.



Cafeteria - Seating Area				Serving Area		
Square Feet -	Square Feet -	Square Feet + / (-)	Seating	Square Feet -	Square Feet - Recommended	Square Feet + / (-)
Actual	Recommended *	Recommended	Capacity	Actual	**	Recommended

3,428

2,160

+ 1,268

216

250

108

+ 142

\* 10 square feet per seat

\*\* ½ a square feet per seat

Kitchen					Lunch Periods	
Square Feet - Actual	Square Feet - Recommended ***	Square Feet + / (-) Recommended	Storage	Average Daily Meals Served	# of Lunch Periods	Begins at:

1,675

3,644

(1,969)

Limited

1,041

7

10:45am

\*\*\* 3 ½ square feet per meal served

### Nurse's Clinic

Square Feet	+ / (-) recommended	# of Sick Beds / Private	# of Restrooms	Sink	Secure Storage	Near front office
286	(214)	2 / no	1	No	Yes	Yes

### Reception Space

— Space is 116 square feet with 2 seats. Limited for 600 students.